



# LAREDO CONSTRUCTION

## M/V Brazos - Class 230 Legs/250 Hull Liftboat - Vessel Specifications

### Main Characteristics

Overall Length	145 ft
Overall Beam	100 ft
Design Draft	9.5 ft (based upon deck load)
Depth	13 ft
Open Deck Space	6,480 sq ft
Fuel Capacity	45,024 gal
Potable Water	41,233 gal
Gross Tonnage	Under 200 GRT
Max Deck Cargo	800,000 lbs.

### Special Features

VIP Stateroom	(2) 1 – Large Bed; 1 – Foldaway Bed; Flat Screen – Satellite TV; Private Lavatory
VIP Office (in stateroom)	(2) Desk; VHF Radio; Satellite Phone; Internet
Training / Lounge Room	(16) Seats; Large Flat Screen – Satellite TV

### Registration

Flag	United States
Load Line	Lloyds
SMS - Voluntary	Lloyds Certified

### Jacking

Max Working Depth	175 ft
Max Height of Deck	211 ft (above mud line)
Max Sea Conditions	4 ft (hard bottom) / 5 ft (soft bottom)

### Legs

Number	3
Length	230 ft
Diameter	7 ft 6 in
Wal Thickness	1.125 in to 1.375 in (varies by location)

### Navigation / Communication Equipment

Navigation	Electronic Bridge Navigation System
Communications	Satellite (phone, fax, internet, email)
Radios	Multichannel VHF Marine Radio; SSB
Positioning	GPS System; AIS
Radar	Furuno ARPA System
Depth	Fathometer
Weather	Weather Receiver; Anemometer
Compass	Electronic

### Cranes (API 2C Certified)

Main	Capacity – 200 tons Boom Length – 120 ft Engine – CAT C27 ACERT Tier 2 (Air Tuggers – 2)
Auxiliary	Capacity – 80 tons – (telescopic) Boom Length – 100 ft / 58 ft Engine – CAT C12 ACERT Tier 2
2 <sup>nd</sup> Auxiliary	Capacity – 20 tons Boom Length – 60 ft Engine – CAT C12 ACERT Tier 2



### Generators

Engines	(2) CAT C9 CERT Tier 3
Generators	(2) 215 kw

### Pads

Length	40 ft
Width	23 ft
Depth	4 ft

### Propulsion

Main Engines	(2) CAT C32 ACERT Tier 2
Shaft Horsepower	2600 hp (kort nozzle)
Bow Thruster	250 hp (tunnel)
Estimated Speed	6 -7 knots

### Accessories

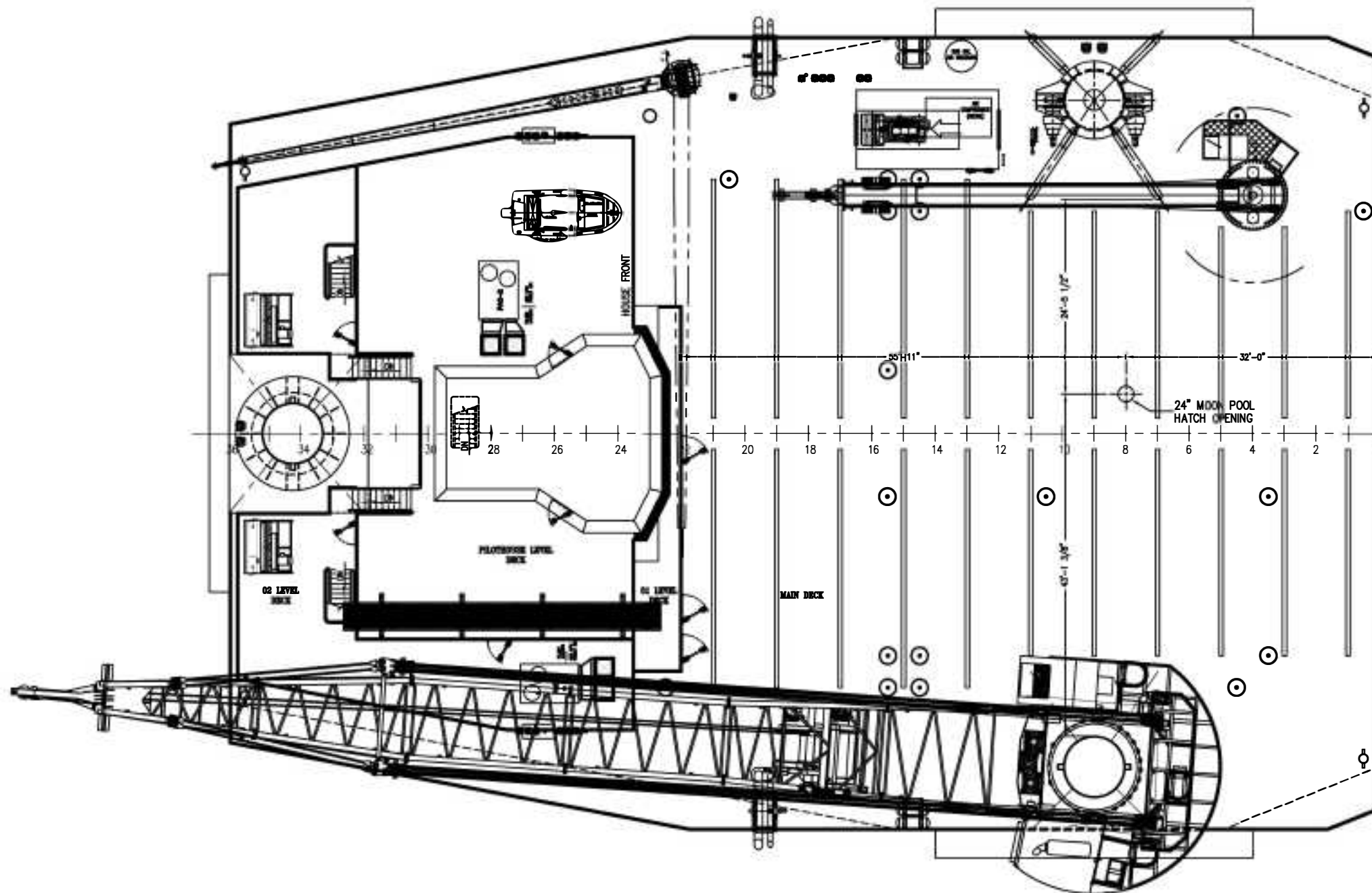
Welding Machines	(4) 400 AMP – (Available for Rental)
Air Compressor	(1) 350 CFM Rotary- (Available for Rental)
Air Compressors	(2)
Submersible Pumps	(2)
Water Maker	(1) 3000 gal per day 6PD
Jetting System (all legs)	
Submersible Preload Pumps	(1)

### Accommodations

Berths	Total 49 (12 crew / 37 PAC's)
Climate	(5) Central A/C and Heating Units
Lounge	Large Flat Screen – Satellite TV; Stereo; Internet; Phone
Lavatory Facilities	(6)
Galley	(24) Seats; Provision Room, Stores and Mess
Laundry	(3) Washers and Dryers (each)

### Moon Pool

30 in Diameter



**PLAN VIEW**  
 GENERAL ARRANGEMENT  
 SCALE: 1/8"=1'-0"

#	DESCRIPTION	DATE	APPROVED
1	GENERAL REVISIONS	03/12/2013	Station01
0	INITIAL ISSUE	08/20/2012	Station01

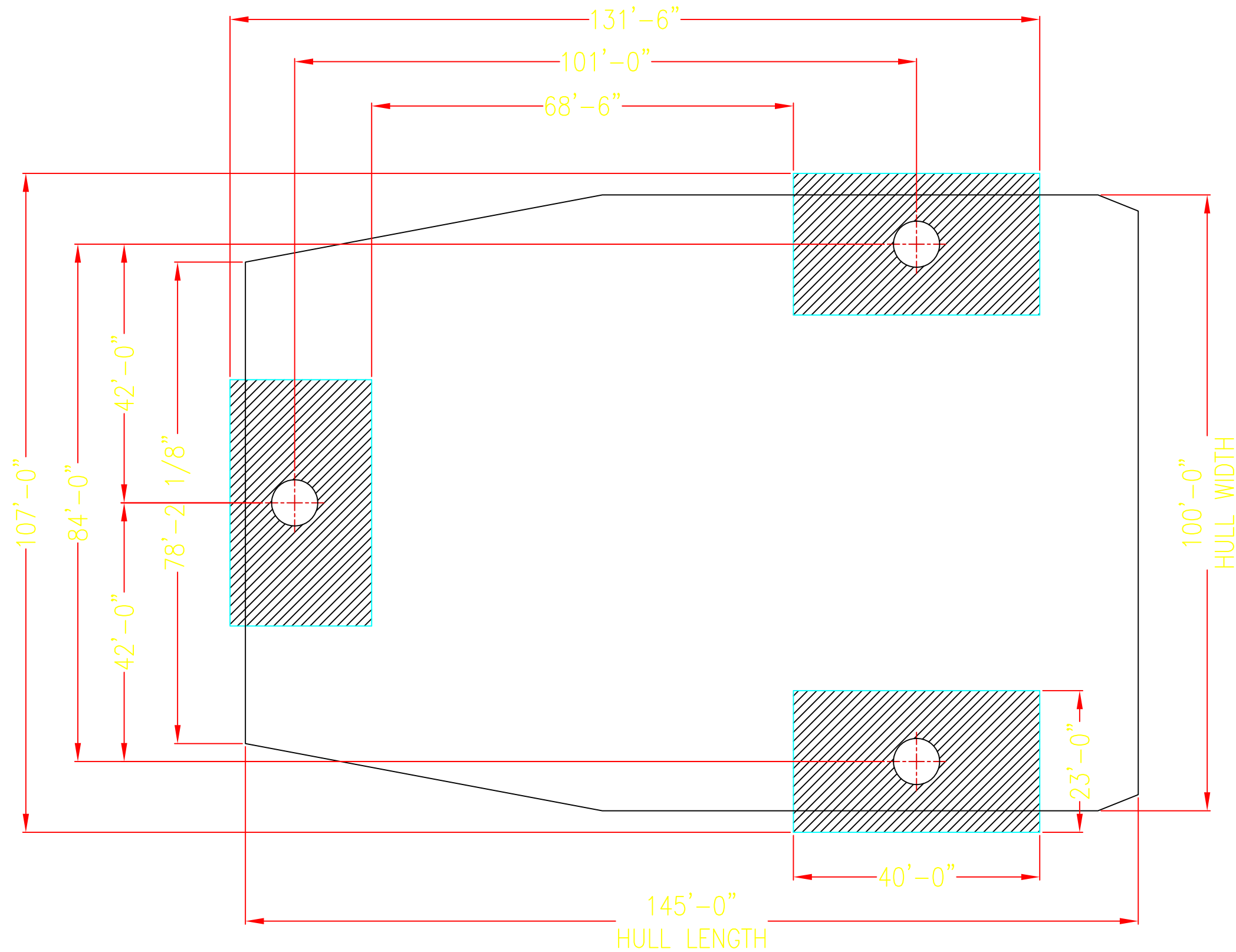
**145 FT X 100 FT X 13 FT LIFTBOAT**

**PLAN VIEW**  
**GENERAL ARRANGEMENT**

DRAWN	08/01/2012	Station01
CHECK		
APPR.		
ISSUED	08/20/2012	
FILE NAME	145x100x13.dwg	

SIZE	HULL	DWG NO	REV
D	1018	1018-A1	1
SCALE	1/8"=1'-0"	WEIGHT	SHEET

# CLASS 230 LIFTBOAT M/V BRAZOS



L/B BRAZOS FOOT PRINT  
HULL 145' x 100' x 13'  
LEG 3 - 7'-6"OD x 230'  
LEG SPACING CTR FWD TO AFT 101'  
LEG SPACING CTR PORT TO STBD 84'  
PONTOON SPACING FWD TO AFT 131'-6"  
PONTOON SPACING PORT TO AFT 107'

**C. CRANE LOAD CHARTS**

Seatrax Model 10532 Starboard Leg Mounted Crane API Specification 2C, 7 <sup>th</sup> Edition Safe Working Load Chart				
Radius	Onboard Lifts		Offboard Lifts	
	Safe Working Load		Safe Working Load	
	6 Part Main Line	Single Part Aux. Line	6 Part Main Line	Single Part Aux. Line
(ft)	(lbs)	(lbs)	(lbs)	(lbs)
25	400,000	50,921	400,000	50,921
30	400,000	50,921	400,000	50,921
35	400,000	50,921	400,000	50,921
40	400,000	50,921	400,000	50,921
45	400,000	50,921	400,000	50,921
50	400,000	50,921	400,000	50,921
55	400,000	50,921	394,227	50,921
60	400,000	50,921	364,742	50,921
65	400,000	50,921	339,365	50,921
70	389,896	50,921	317,413	50,921
75	366,571	50,921	291,340	50,921
80	341,981	50,921	268,265	50,921
85	307,436	50,921	249,037	50,921
90	277,617	50,921	232,813	50,921
95	251,375	50,921	218,917	50,921
100	277,851	50,921	205,015	50,921
105	206,358	50,921	188,069	50,921
110	186,284	50,921	171,921	50,921
115	166,970	50,921	156,128	50,921
120	147,434	50,921	139,921	50,921
127	105,626	50,921	105,471	50,921

RAM 80 TON 58/100 FT. TELESCOPIC (PORT) CRANE "BRAZOS" SERIAL NO. 080-010-3345				
EXTENDED			MAXIMUM	
SAFE WORKING LOAD				
MAIN HOIST BOOM RADIUS	MAIN HOIST BOOM ANGLE	MAIN HOIST ONBOARD RATING	MAIN HOIST OFFBOARD RATING	AUX. HOIST OFFBOARD RATING
(ft)	(degrees)	(x 1000 lbs)	(x 1000 lbs)	(x 1000 lbs)
16	80	73.000	48.545	12.000
20	78	67.433	44.843	12.000
25	75	60.251	40.067	12.000
30	72	54.490	36.236	12.000
35	69	49.675	33.034	12.000
40	66	45.560	30.297	12.000
45	63	24.209	16.099	12.000
50	59	39.104	26.004	12.000
55	56	36.372	24.187	12.000
60	52	33.562	22.319	12.000
65	48	30.969	20.594	12.000
70	44	28.865	19.195	12.000
75	40	26.904	17.891	12.000
80	35	23.000	15.295	12.000
85	30	19.000	12.635	12.000
90	23	16.000	10.640	10.667
95	13	13.000	8.645	8.667
97	0	11.000	7.315	7.333

<b>RAM 80 TON 58/100 FT. TELESCOPIC (PORT) CRANE "BRAZOS"</b> <b>SERIAL NO. 080-010-3345</b>				
<b>FULLY RETRACTED</b> <b>MAXIMUM SAFE WORKING LOAD</b>				
<b>MAIN HOIST BOOM RADIUS</b>	<b>MAIN HOIST BOOM ANGLE</b>	<b>MAIN HOIST ONBOARD RATING</b>	<b>MAIN HOIST OFFBOARD RATING</b>	<b>AUX. HOIST OFFBOARD RATING</b>
<b>(ft)</b>	<b>(degrees)</b>	<b>(x 1000 lbs)</b>	<b>(x 1000 lbs)</b>	<b>(x 1000 lbs)</b>
9	80	160.000	106.400	12,000
10	79	160.000	106.400	12,000
15	74	160.000	106.400	12,000
20	69	145.000	96.425	12,000
25	63	130.000	86.450	12,000
30	58	115.000	76.475	12,000
35	51	100.000	66.500	12,000
40	44	85.000	56.525	12,000
45	37	71.000	47.215	12,000
50	27	60.000	39.900	12,000
55	8	50.000	33.250	12,000
55	0	42.000	27.930	12,000

<b>Nautilus Model 20-60 Auxiliary Crane Lifting Load Capacity Chart</b>						
<b>Radius</b>	<b>Boom Angle</b>	<b>Main Hoist</b>		<b>Auxiliary Hoist</b>		
		<b>4 Part Reeving</b>		<b>1 Part Reeving</b>		
		<b>Static</b>	<b>Dynamic</b>	<b>Static</b>	<b>Dynamic</b>	<b>Personnel</b>
<b>(ft)</b>	<b>(deg)</b>	<b>(lbs)</b>	<b>(lbs)</b>	<b>(lbs)</b>	<b>(lbs)</b>	<b>(lbs)</b>
10	80.5	29056	26600	5920	5920	2344
15	76.0	29056	24738	5920	5920	2344
20	71.0	27240	18114	5920	5920	2344
25	66.0	24560	16332	5920	5920	2344
30	60.5	17117	11382	5920	5920	2344
35	55.0	15350	10207	5920	5920	2344
40	49.0	11970	7966	5920	5920	2344
45	42.0	9800	6517	5920	5920	2344
50	34.5	8985	5975	5920	5920	2344
55	24.5	7237	4812	5920	4812	2344
60	0	6900	4588	5920	4588	2294