



# LAREDO CONSTRUCTION

## Mr. Two Hooks – Derrick Barge – Vessel Specifications



### Main Characteristics

|                            |             |
|----------------------------|-------------|
| Overall Length             | 210 ft      |
| Overall Beam               | 70 ft       |
| Depth (Barge Only)         | 16 ft       |
| Design Draft (ABS Loading) | 9 ft        |
| Natural Draft              | 3 ft        |
| Usable Deck Space          | 5,000 sq ft |

### Mooring

|                        |                                   |
|------------------------|-----------------------------------|
| 4 Point Mooring System | RB90                              |
| 4 Anchors              | 9,000 lbs                         |
| 2 Spuds                | 30 in x 1 in Wall x 60-75 ft Long |

### Crane

|             |                               |
|-------------|-------------------------------|
| Capacity    | LinkBelt 518 Crawler 150 tons |
| Boom Length | 120 ft                        |

### Navigation / Communication Equipment

|        |                                    |
|--------|------------------------------------|
| Radios | Multichannel VHF Marine Radio; SSB |
|--------|------------------------------------|

### Derrick

|                   |                                   |
|-------------------|-----------------------------------|
| Capacity          | Main – 600 tons<br>Aux – 350 tons |
| Jib Length        | 30 ft                             |
| Boom Length       | 120 ft                            |
| Derrick Engines   | 8V92 Detroit Diesel               |
| Heel Pin to Stern | 20 ft 6 in                        |

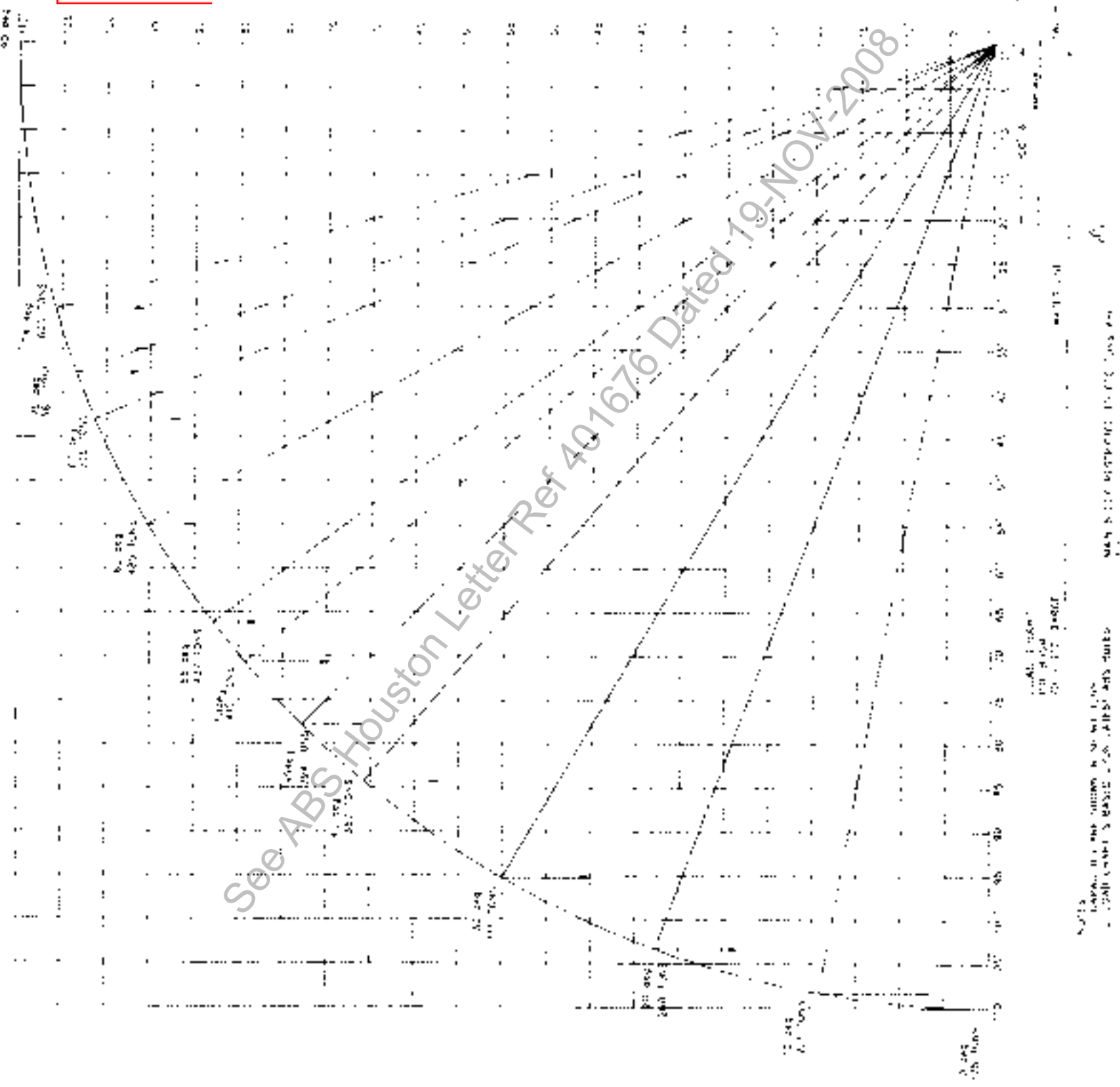
### Accessories

|                   |              |
|-------------------|--------------|
| Generators        | (2) 75 eKw   |
| Generator Engines | (2) CAT 3054 |
| Air Compressors   | (2) 385 CFM  |
| Welding Machines  | (2) 350 AMP  |

### Capacities

|       |            |
|-------|------------|
| Fuel  | 10,000 gal |
| Water | 10,000 gal |

APPROVED by  
 ABS on behalf of the  
 JOCG for compliance  
 with applicable USCG  
 Regulations subject to  
 any amendments or  
 comments in ABS letter  
**ABS**  
 USCG approval applies  
 only to specified vessels.

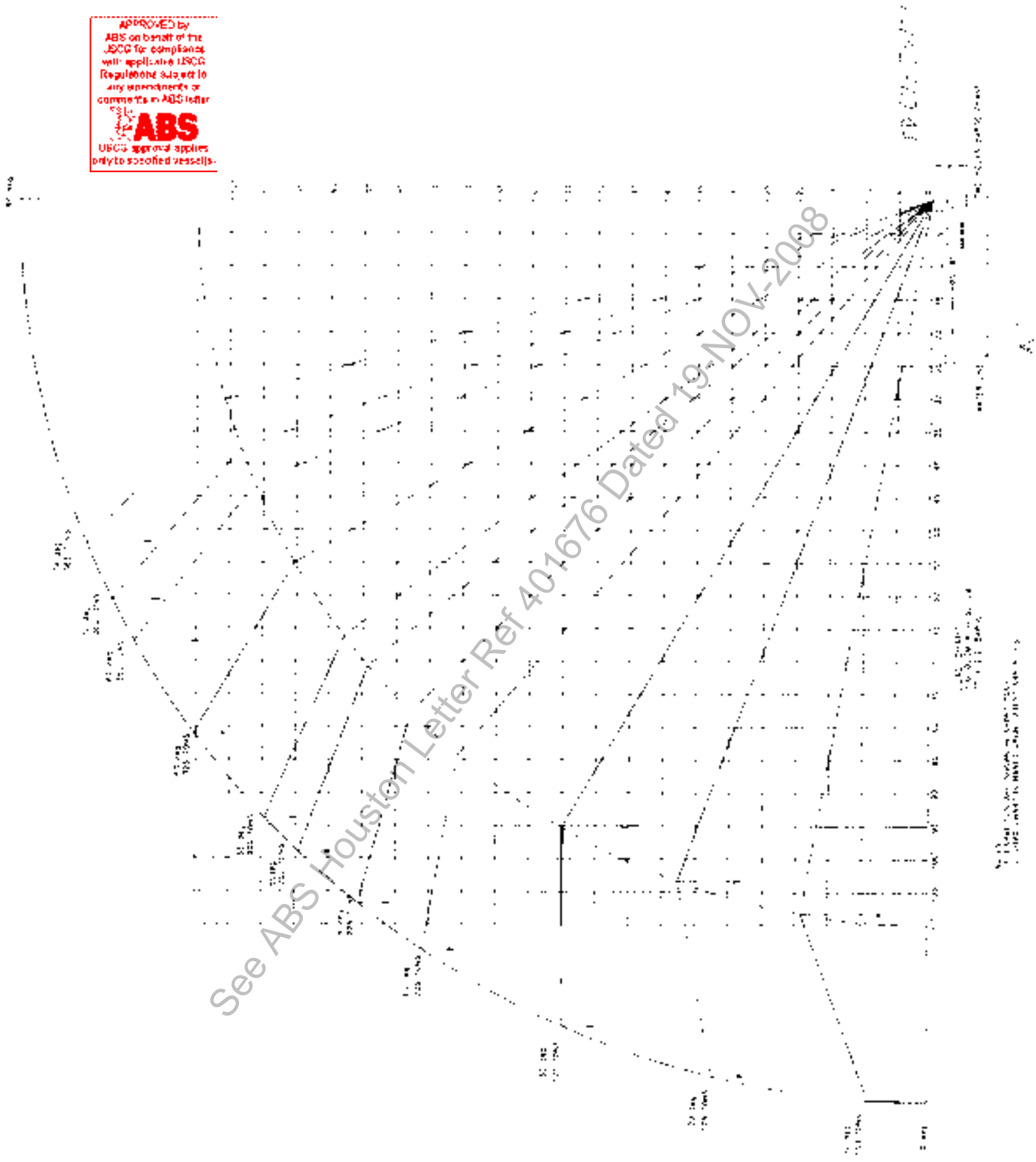


NOTES:  
 1. ALL DIMENSIONS ARE IN METERS.  
 2. ALL DIMENSIONS ARE TO THE CENTERLINE UNLESS OTHERWISE SPECIFIED.

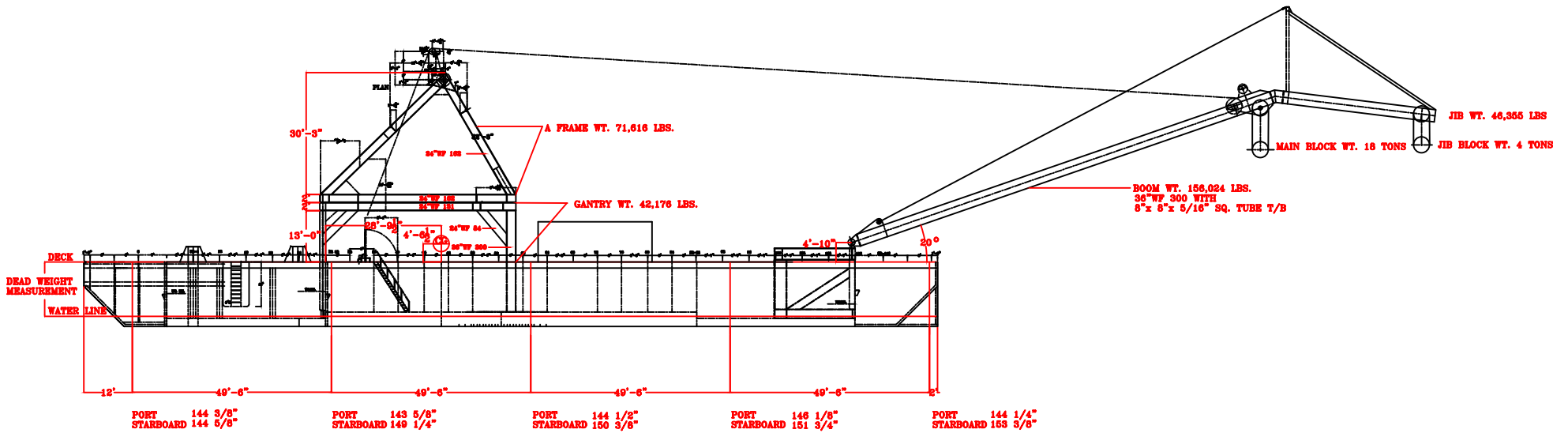
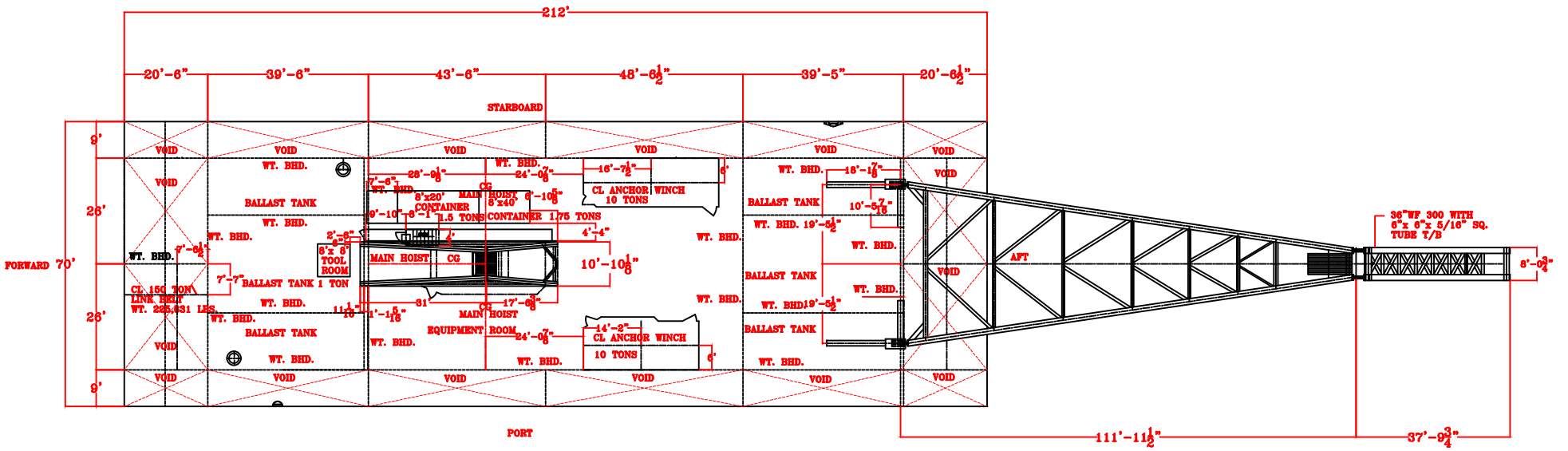
APPROVED by  
ABS on behalf of the  
USCG for compliance  
with applicable USCG  
Regulations subject to  
any amendments or  
comments in ABS letter



See ABS Houston Letter Ref 401676 Dated 19-NOV-2008



1. THIS DRAWING IS UNLESS OTHERWISE SPECIFIED TO BE IN ACCORDANCE WITH THE LATEST EDITIONS OF THE ABS RULES FOR BUILDING AND CLASSIFICATION OF STEEL HULLS AND DECKS.



ELEVATION

NOTES:  
 1. TWO HOOKS  
 ABS REGISTRY  
 NO. 1058708